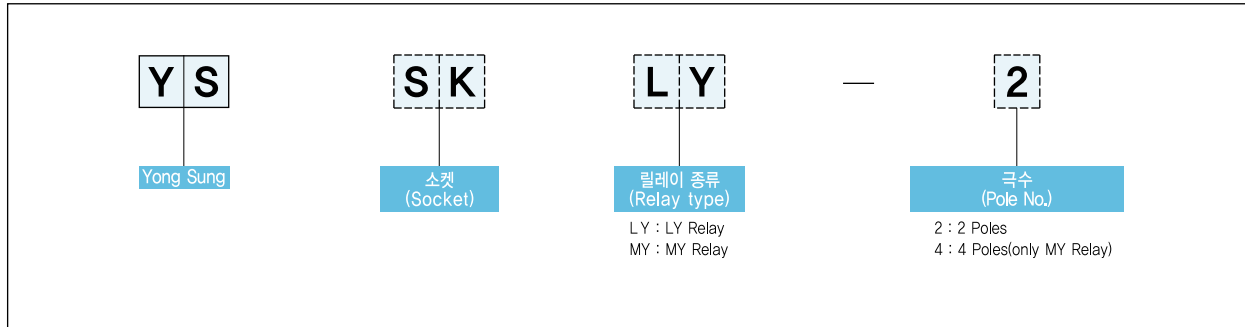


형식 구분도 | Type Classification Diagram |



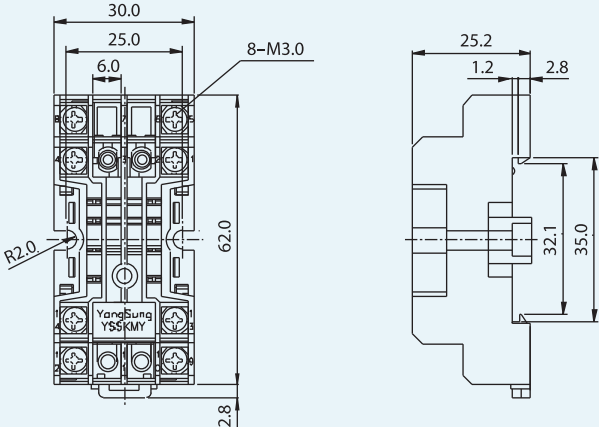
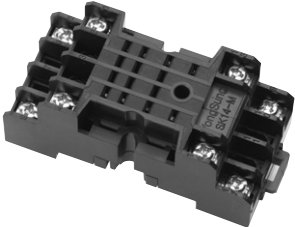
성능 개요 | Performance Summary |

항목 (Item)	성능 (Performance)
절연저항 (Insulation resistance)	100MΩ 이상 (Above 100MΩ) (DC 500V, Meg)
내전압 (Withstand voltage)	AC 2,000V/min (50~60Hz)
정격절연전압 (Rated insulation voltage)	AC/DC 250V

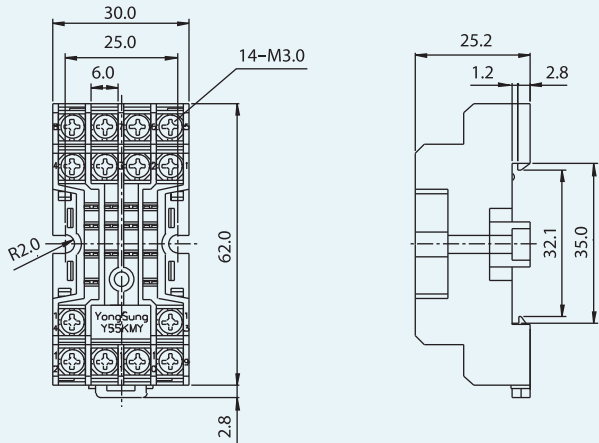
부품 재질 | Part Materials |

부품 (Part)	재질 (Materials)		
	SK MY-2	SK MY-4	SK LY-2
UPPER CASE	ABS난연 (Flame retardant ABS resin)		
UNDER CASE			
소켓단자 (Socket terminal)	인청동 (Phosphor bronze) – Ni Plating		
단자 (Terminal)	탄소강 (Carbon steel) – Zn Plating		
볼트 (Bolt)	탄소강 (Carbon steel) – Zn Plating		

YS SK MY-2



YS SK MY-4



YS SK LY-2

